

**Archdiocese of St. Louis  
The Reclamation Center  
Item Catalog**

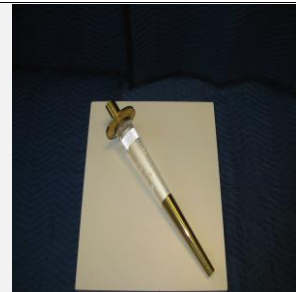
**Category Candle Holder**

**Identification** 408  
**Category** Candle Holder  
**Description** Candle Holder  
**Size** 1/2" x 6"  
**Material** Metal  
**Color** Silver  
**Condition** 8 *Lowest to Highest (1= poor, 10 = Excellent)*



*Free will donation, commensurate to fair market value*

**Identification** 415  
**Category** Candle Holder  
**Description** Candle Holder  
**Size** 17"  
**Material** Brass  
**Color** Brass  
**Condition** 8 *Lowest to Highest (1= poor, 10 = Excellent)*



*Free will donation, commensurate to fair market value*

**Identification** 874  
**Category** Candle Holder  
**Description** Candle Holder  
**Size** 61"x18"x18"  
**Material** Brass  
**Color** Brass  
**Condition** 7 *Lowest to Highest (1= poor, 10 = Excellent)*



*Free will donation, commensurate to fair market value*

**Identification** 1224  
**Category** Candle Holder  
**Description** Candle Holder  
**Size** 60"x15"x15"  
**Material** Brass  
**Color** Brass  
**Condition** 9 *Lowest to Highest (1= poor, 10 = Excellent)*



*Free will donation, commensurate to fair market value*

WE THANK YOU FOR YOUR GENEROSITY

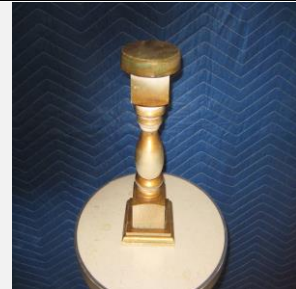
Donations can be made payable to: RECLAMATION CENTER Mail Stop 100700 P.O. Box 953745 St. Louis, Mo. 63195-3745

**Identification** 1285  
**Category** Candle Holder  
**Description** Candle Holder set  
**Size** 13 1/2" x 9 1/2" x 5"  
**Material** Metal  
**Color** Brass  
**Condition** 8 *Lowest to Highest (1= poor, 10 = Excellent)*



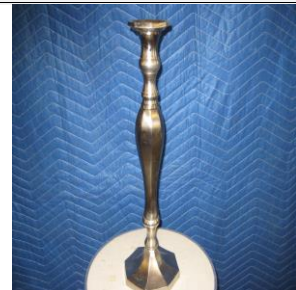
*Free will donation, commensurate to fair market value*

**Identification** 1286  
**Category** Candle Holder  
**Description** Candle Holder  
**Size** 10 1/2" x 4"  
**Material** Wood  
**Color** Gold  
**Condition** 7 *Lowest to Highest (1= poor, 10 = Excellent)*



*Free will donation, commensurate to fair market value*

**Identification** 1288  
**Category** Candle Holder  
**Description** Candle Holder  
**Size** 5" x 17"  
**Material** Metal  
**Color** Silver  
**Condition** 9 *Lowest to Highest (1= poor, 10 = Excellent)*



*Free will donation, commensurate to fair market value*

**Identification** 1296  
**Category** Candle Holder  
**Description** Candle Holder  
**Size** 7" x 10 1/2"  
**Material** Metal  
**Color** Brass  
**Condition** 9 *Lowest to Highest (1= poor, 10 = Excellent)*



*Free will donation, commensurate to fair market value*

WE THANK YOU FOR YOUR GENEROSITY

Donations can be made payable to: RECLAMATION CENTER Mail Stop 100700 P.O. Box 953745 St. Louis, Mo. 63195-3745

**Identification** 1364  
**Category** Candle Holder  
**Description** Candle Holder  
**Size** 3"  
**Material** Glass  
**Color** Clear  
**Condition** 8

*Lowest to Highest (1= poor, 10 = Excellent)*



*Free will donation, commensurate to fair market value*

**Identification** 1640  
**Category** Candle Holder  
**Description** Candle Holder  
**Size** 4" x 4"  
**Material** Glass  
**Color** Clear  
**Condition** 10

*Lowest to Highest (1= poor, 10 = Excellent)*



*Free will donation, commensurate to fair market value*

**Identification** 1780  
**Category** Candle Holder  
**Description** Candle Holder  
**Size** 42: 8"  
**Material** Metal  
**Color** Silver  
**Condition** 9

*Lowest to Highest (1= poor, 10 = Excellent)*



*Free will donation, commensurate to fair market value*

**Identification** 2078  
**Category** Candle Holder  
**Description** Candle Holder  
**Size** 43"x 7 1/2"  
**Material** Brass/Wood  
**Color** Brass/Wood  
**Condition** 9

*Lowest to Highest (1= poor, 10 = Excellent)*



*Free will donation, commensurate to fair market value*

WE THANK YOU FOR YOUR GENEROSITY

Donations can be made payable to: RECLAMATION CENTER Mail Stop 100700 P.O. Box 953745 St. Louis, Mo. 63195-3745

4/17/2024

Page 3 of 10

**Identification** 2131  
**Category** Candle Holder  
**Description** Candle Holder  
**Size** Small  
**Material** Glass  
**Color** Clear  
**Condition** 9

*Lowest to Highest (1= poor, 10 = Excellent)*



*Free will donation, commensurate to fair market value*

**Identification** 2313  
**Category** Candle Holder  
**Description** Candle Holder  
**Size** 52"  
**Material** Metal  
**Color** Gold  
**Condition** 8

*Lowest to Highest (1= poor, 10 = Excellent)*



*Free will donation, commensurate to fair market value*

**Identification** 2314  
**Category** Candle Holder  
**Description** Candle Holder  
**Size** 43"  
**Material** Metal  
**Color** Gold  
**Condition** 8

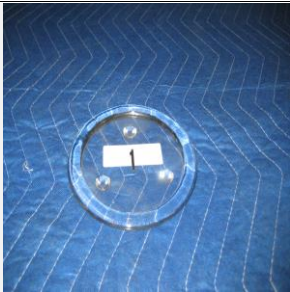
*Lowest to Highest (1= poor, 10 = Excellent)*



*Free will donation, commensurate to fair market value*

**Identification** 2334  
**Category** Candle Holder  
**Description** Candle Holder  
**Size** 5 1/2"  
**Material** Glass  
**Color** Clear  
**Condition** 10

*Lowest to Highest (1= poor, 10 = Excellent)*



*Free will donation, commensurate to fair market value*

WE THANK YOU FOR YOUR GENEROSITY

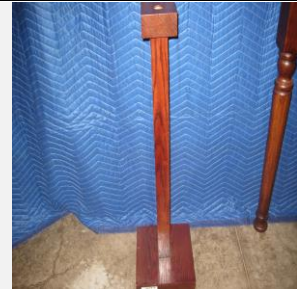
Donations can be made payable to: RECLAMATION CENTER Mail Stop 100700 P.O. Box 953745 St. Louis, Mo. 63195-3745  
 4/17/2024 Page 4 of 10

**Identification** 2872  
**Category** Candle Holder  
**Description** Candle Holder  
**Size** 14" x 2 1/2"  
**Material** Metal  
**Color** Gold  
**Condition** 9 *Lowest to Highest (1= poor, 10 = Excellent)*



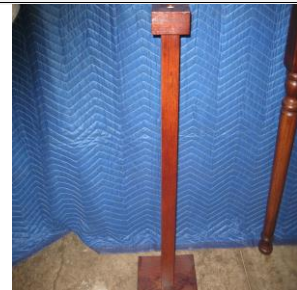
*Free will donation, commensurate to fair market value*

**Identification** 2985  
**Category** Candle Holder  
**Description** Candle Holder  
**Size** 34" x 10"  
**Material** Wood  
**Color** Brown  
**Condition** 7 *Lowest to Highest (1= poor, 10 = Excellent)*



*Free will donation, commensurate to fair market value*

**Identification** 2987  
**Category** Candle Holder  
**Description** Candle Holder  
**Size** 36"  
**Material** Wood  
**Color** Brass  
**Condition** 10 *Lowest to Highest (1= poor, 10 = Excellent)*



*Free will donation, commensurate to fair market value*

**Identification** 3221  
**Category** Candle Holder  
**Description** Candle Holder  
**Size** 18" x 4"  
**Material** Metal  
**Color** Gold/Silver  
**Condition** 10 *Lowest to Highest (1= poor, 10 = Excellent)*



*Free will donation, commensurate to fair market value*

WE THANK YOU FOR YOUR GENEROSITY

Donations can be made payable to: RECLAMATION CENTER Mail Stop 100700 P.O. Box 953745 St. Louis, Mo. 63195-3745

**Identification** 3640  
**Category** Candle Holder  
**Description** Candle Holder  
**Size** 4 1/4"  
**Material** Glass  
**Color** Clear  
**Condition** 10

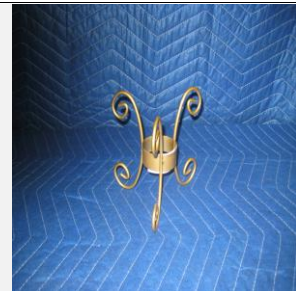
*Lowest to Highest (1= poor, 10 = Excellent)*



*Free will donation, commensurate to fair market value*

**Identification** 3819  
**Category** Candle Holder  
**Description** Candle Holder  
**Size** 5 1/2"  
**Material** Metal  
**Color** Gold  
**Condition** 8

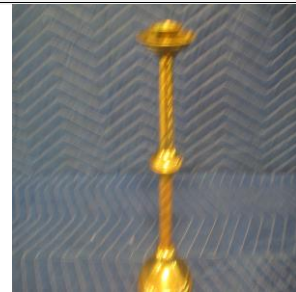
*Lowest to Highest (1= poor, 10 = Excellent)*



*Free will donation, commensurate to fair market value*

**Identification** 4166  
**Category** Candle Holder  
**Description** Candle Holder  
**Size** 11"  
**Material** Metal  
**Color** Brass  
**Condition** 8

*Lowest to Highest (1= poor, 10 = Excellent)*



*Free will donation, commensurate to fair market value*

**Identification** 4315  
**Category** Candle Holder  
**Description** Candle Holder  
**Size**  
**Material** Metal  
**Color** Brass  
**Condition** 7

*Lowest to Highest (1= poor, 10 = Excellent)*



*Free will donation, commensurate to fair market value*

WE THANK YOU FOR YOUR GENEROSITY

Donations can be made payable to: RECLAMATION CENTER Mail Stop 100700 P.O. Box 953745 St. Louis, Mo. 63195-3745  
4/17/2024 Page 6 of 10

**Identification** 4682  
**Category** Candle Holder  
**Description** Candle Holder  
**Size** 4 1/2"  
**Material** Glass  
**Color** Clear  
**Condition** 10

*Lowest to Highest (1= poor, 10 = Excellent)*



*Free will donation, commensurate to fair market value*

**Identification** 5142  
**Category** Candle Holder  
**Description** Candle Holder  
**Size** 48 1/2"  
**Material** Metal  
**Color** Brass  
**Condition** 7

*Lowest to Highest (1= poor, 10 = Excellent)*



*Free will donation, commensurate to fair market value*

**Identification** 5299  
**Category** Candle Holder  
**Description** Candle Holder  
**Size** 4"  
**Material** Glass  
**Color** Clear  
**Condition** 10

*Lowest to Highest (1= poor, 10 = Excellent)*



*Free will donation, commensurate to fair market value*

**Identification** 5401  
**Category** Candle Holder  
**Description** Candle Holder  
**Size** 46"  
**Material**  
**Color**  
**Condition** 9

*Lowest to Highest (1= poor, 10 = Excellent)*



*Free will donation, commensurate to fair market value*

WE THANK YOU FOR YOUR GENEROSITY

Donations can be made payable to: RECLAMATION CENTER Mail Stop 100700 P.O. Box 953745 St. Louis, Mo. 63195-3745

4/17/2024

Page 7 of 10

**Identification** 5447  
**Category** Candle Holder  
**Description** Candle Holder  
**Size** 4 3/4"  
**Material** Metal  
**Color** Gold  
**Condition** 8

*Lowest to Highest (1= poor, 10 = Excellent)*



*Free will donation, commensurate to fair market value*

**Identification** 5448  
**Category** Candle Holder  
**Description** Candle Holder  
**Size** 3 1/2"  
**Material** Metal  
**Color** Gold  
**Condition** 9

*Lowest to Highest (1= poor, 10 = Excellent)*



*Free will donation, commensurate to fair market value*

**Identification** 5589  
**Category** Candle Holder  
**Description** Candle Holder  
**Size** 60"  
**Material** Metal  
**Color** Brass  
**Condition** 10

*Lowest to Highest (1= poor, 10 = Excellent)*



*Free will donation, commensurate to fair market value*

**Identification** 5590  
**Category** Candle Holder  
**Description** Candle Holder  
**Size** 48"  
**Material** Metal  
**Color** Brass  
**Condition** 10

*Lowest to Highest (1= poor, 10 = Excellent)*



*Free will donation, commensurate to fair market value*

WE THANK YOU FOR YOUR GENEROSITY

Donations can be made payable to: RECLAMATION CENTER Mail Stop 100700 P.O. Box 953745 St. Louis, Mo. 63195-3745

4/17/2024

Page 8 of 10



**Identification** 5591  
**Category** Candle Holder  
**Description** Candle Holder  
**Size** 47"  
**Material** Metal  
**Color** Brass  
**Condition** 10

*Lowest to Highest (1= poor, 10 = Excellent)*



*Free will donation, commensurate to fair market value*

**Identification** 5611  
**Category** Candle Holder  
**Description** Candle Holder  
**Size** 6" x 4"  
**Material** Wood  
**Color** Brown  
**Condition** 10

*Lowest to Highest (1= poor, 10 = Excellent)*



*Free will donation, commensurate to fair market value*

**Identification** 6039  
**Category** Candle Holder  
**Description** Candle Holder  
**Size** 35 1/4"  
**Material** Metal  
**Color** Gold  
**Condition** 7

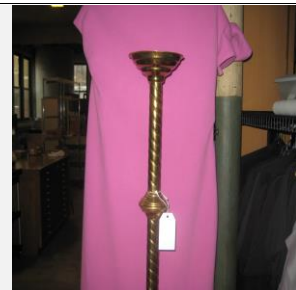
*Lowest to Highest (1= poor, 10 = Excellent)*



*Free will donation, commensurate to fair market value*

**Identification** 6040  
**Category** Candle Holder  
**Description** Candle Holder  
**Size** 30"  
**Material** Metal  
**Color** Gold  
**Condition** 8

*Lowest to Highest (1= poor, 10 = Excellent)*



*Free will donation, commensurate to fair market value*

WE THANK YOU FOR YOUR GENEROSITY

Donations can be made payable to: RECLAMATION CENTER Mail Stop 100700 P.O. Box 953745 St. Louis, Mo. 63195-3745

4/17/2024

Page 9 of 10

**Identification** 6183  
**Category** Candle Holder  
**Description** Candle Holder  
**Size** 6"  
**Material** Metal  
**Color** Gold  
**Condition** 9

*Lowest to Highest (1= poor, 10 = Excellent)*



*Free will donation, commensurate to fair market value*

**Identification** 6323  
**Category** Candle Holder  
**Description** Candle Holder  
**Size** 6"  
**Material** Glass  
**Color** Clear  
**Condition** 10

*Lowest to Highest (1= poor, 10 = Excellent)*



*Free will donation, commensurate to fair market value*

WE THANK YOU FOR YOUR GENEROSITY

Donations can be made payable to: RECLAMATION CENTER Mail Stop 100700 P.O. Box 953745 St. Louis, Mo. 63195-3745

4/17/2024

Page 10 of 10